



# **IP-CONNECT**

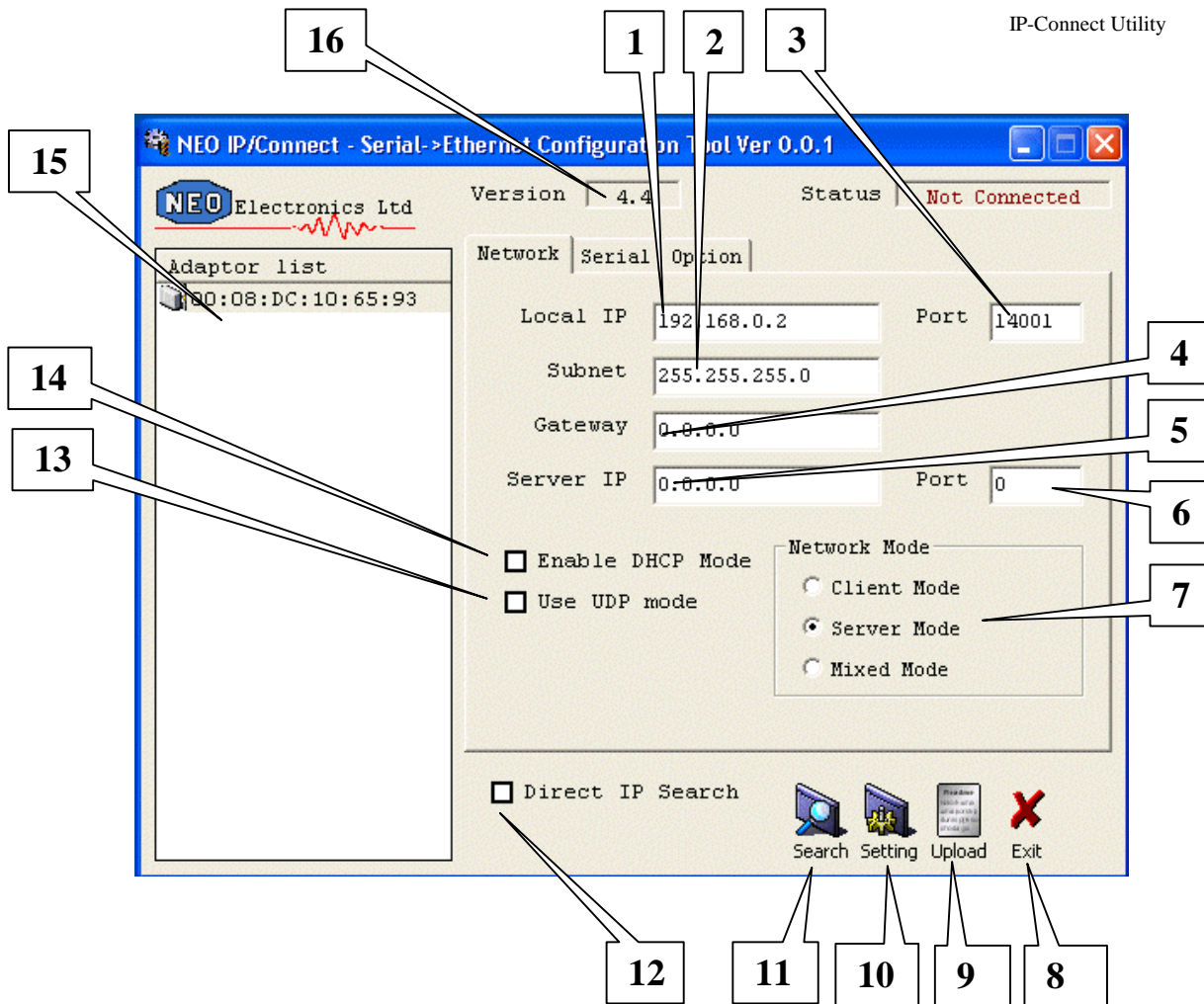
**10 / 100Mbps**

**Serial / Ethernet Interface Module**

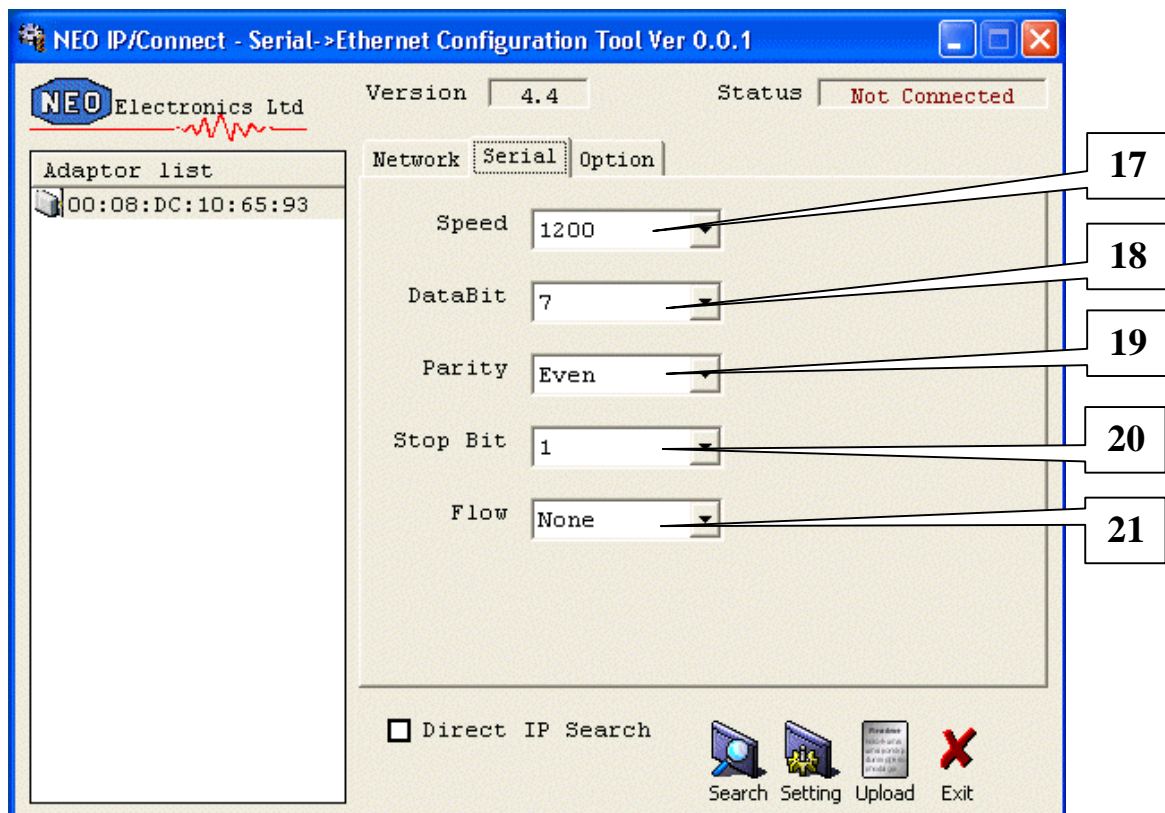
**Draft Configuration Utility Manual**

**Neo Electronics Ltd  
Neville Street  
Chadderton  
Oldham  
OL9 6LD**

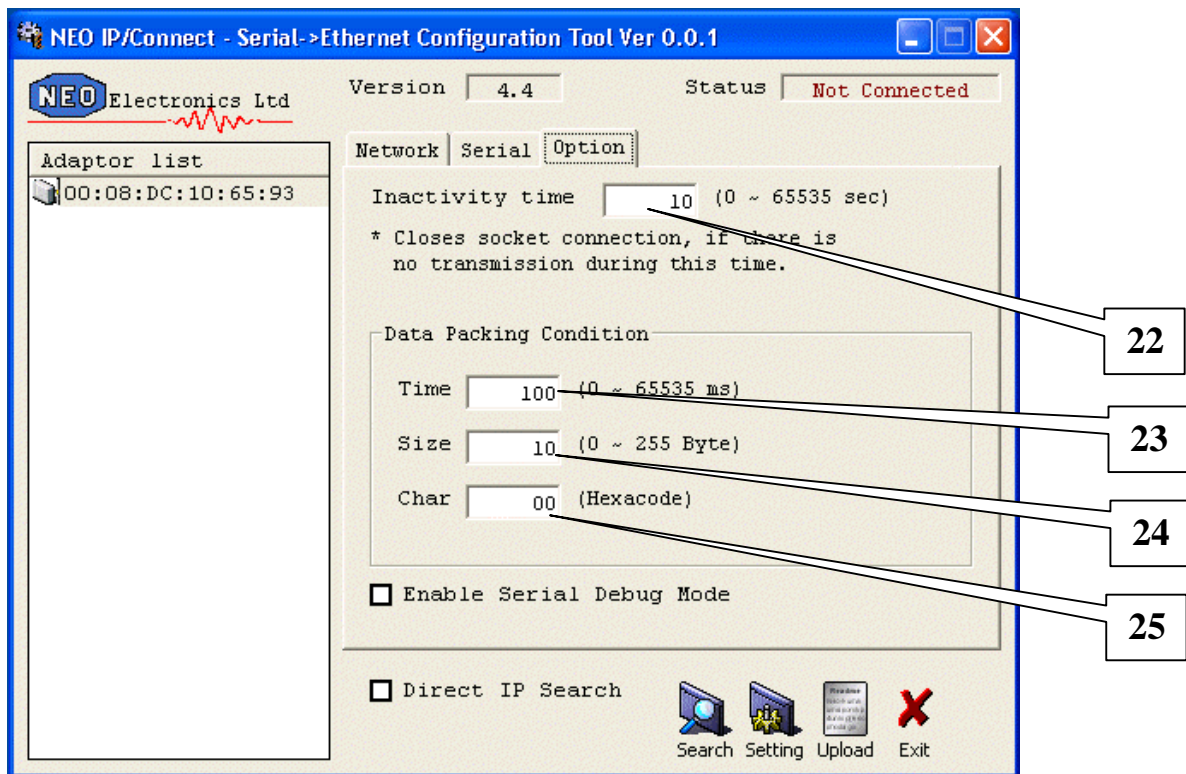
**Tel 0161 633 2148  
Fax 0161 627 5324  
Web [www.neo.co.uk](http://www.neo.co.uk)**



1. Local IP address.
2. Local Subnet Mask.
3. Server Port Number.
  - a. When Operating in server Mode the module listens on this port for a connection.
4. Local Subnet Gateway.
5. Remote Server Address.
  - a. When operating in Client mode the module connects to a server at this address.
6. Remote Server Port.
  - a. When operating in Client mode the module connects to a server listening on this port.
7. Network operating Mode
  - a. Client Mode – Module operates in client mode.
  - b. Server Mode – Module operates in server mode.
  - c. Mixed Mode – Modules operated in both client & sever modes.
8. Exit Button.
  - a. Quit Application
9. Upload Button.
  - a. Upload new firmware to the Module
10. Settings Upload Button.
  - a. Upload new settings to the Module.
11. Search for Modules.
  - a. Search the local Network for Modules.
12. Direct IP search option.
  - a. Search for a Module with a particular IP address.
13. UDP Option. (Enable UDP Option)
14. DHCP Option. (Enable DHCP Client)
15. Device List.
  - a. Displays the MAC address of all IP-Connect modules found using the Search option.
16. Module Firmware Version.
  - a. Firmware of current selected device.



- 17. Serial port Baud rate. (Baud rate 1200 – 115200bps)
- 18. Serial port Number of data bits.
- 19. Serial port Parity.
- 20. Serial Port Number of Stop Bits.
- 21. Serial port Flow Control.



**22. Inactivity Time.**

- a. The socket will be closed if there has been no data for this amount of time.

**23. Data Time threshold.**

- a. Max amount of time data can be held in the buffer before being transmitted to Ethernet.  
 b. Max amount of data that be held in the buffer before being transmitted to Ethernet.  
 c. Trigger character to force buffer to be transmitted to Ethernet.